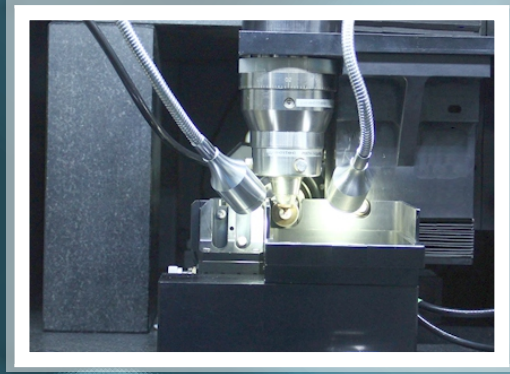


# StentMaster



Precision cutting at its best

## ➔ Key Features

- ➔ Highly precise cutting achieved with harmonization of the fiber laser, accurate CNC platform and advanced motion controlled software.
- ➔ Minimum heat effected zone
- ➔ Automatic tube feeding mechanism
- ➔ Computer vision assisted tube centering facility.
- ➔ Full digital control of all cutting process parameters
- ➔ Velocity profiling helps to minimize geometry errors in tight profiles
- ➔ Suitable for dry as well as wet cutting process.
- ➔ Machine is constructed around solid granite base and highly rigid frame structure for stable results.
- ➔ One click cutting program generation from “Cagila” software

## ➔ Specifications

- ➔ Laser: 100 Watt fiber
- ➔ Wavelength : 1090  $\pm$ 5 nm
- ➔ Tube size : up to 7.9 mm (for dry cutting), up to 3.0 mm (for wet cutting)
- ➔ Axis travel: 100 mm
- ➔ Accuracy:  $\pm$  2  $\mu$ m ( $\pm$  0.5  $\mu$ m available as option)
- ➔ Dimensions : 1200 (L) x 700 (W) x 1355 (H) (Laser cutting machine)  
745 (L) x 700 (W) x 775 (H) (Control station)
- ➔ Weight : 500 kgs. (Laser cutting machine), 125 kgs. (Control station)
- ➔ Power consumption: 1500 Watts
- ➔ Power supply: 230 VAC 50 Hz or  
110 VAC 60Hz

Distributed by: